

USB Digital Gauge Measurement Software

MeasureViewer

Analog
×
Digital



— Features —

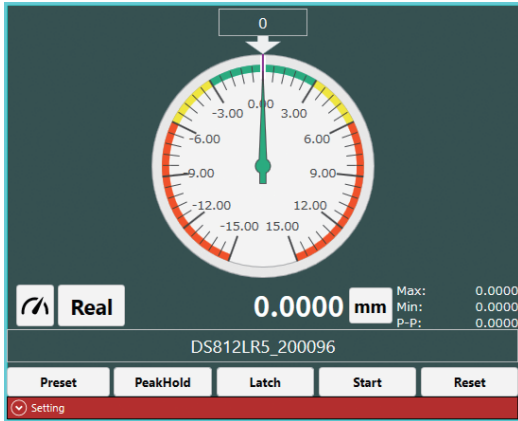
- **Clear display with multiple options**
Numerical display, horizontal bar graph, vertical bar graph and analog meter display
- **Measurement mode**
Select from current, maximum, minimum, and P-P values
- **Real-time chart display**
Latch, peak hold, and presets are available
- **Measurement data in CSV format**
Saves measurement time. Measurement values and judgements results are available via key press or timed intervals



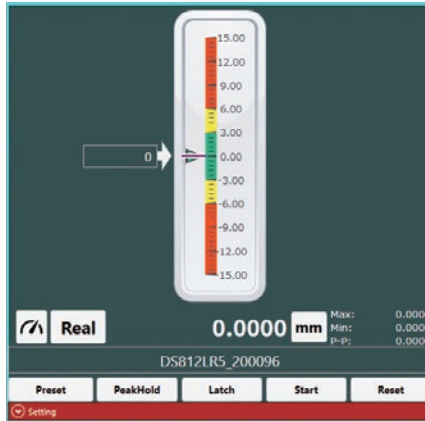
MeasureViewer

USB Digital Gauge Measurement Software

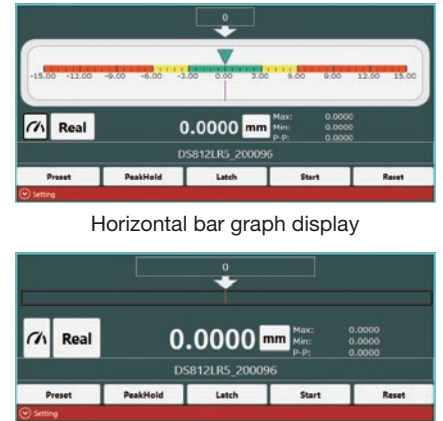
■ Various measurement value displays



Analog meter display



Vertical bar graph display

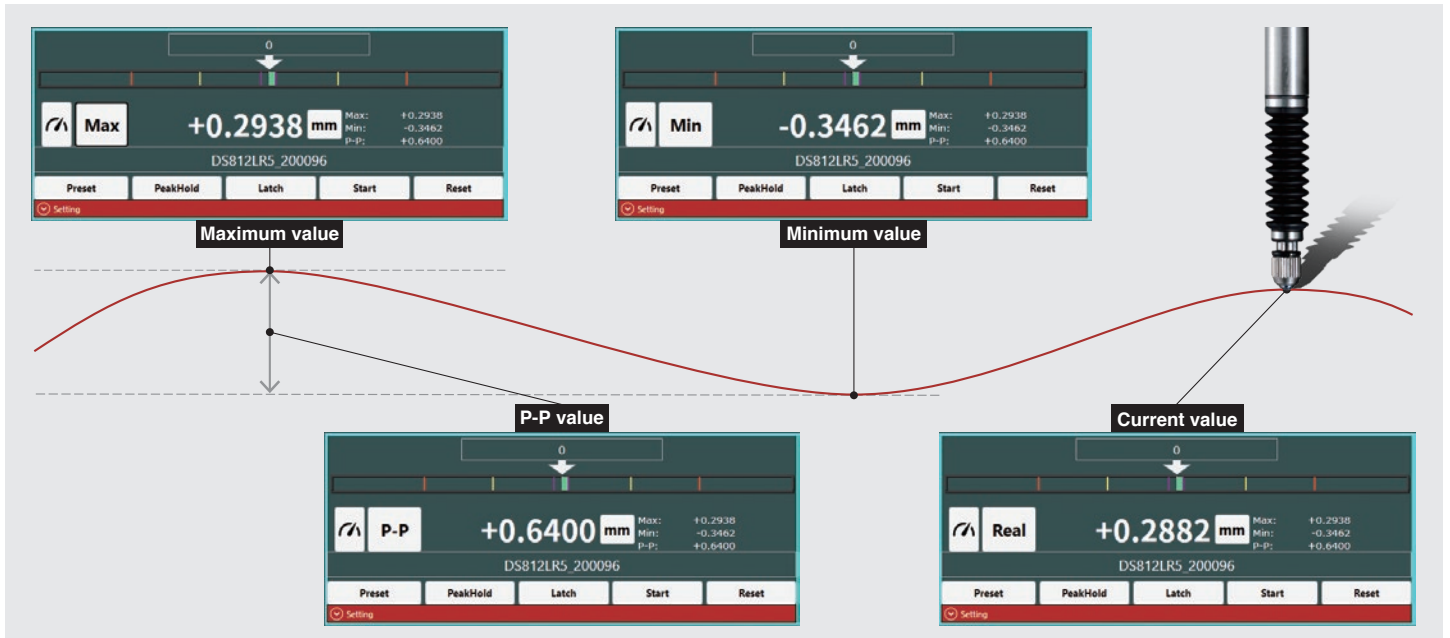


Horizontal bar graph display



Numerical display

■ Selectable measurement mode



■ Main Functions



- Measurement value display switching
- Selectable display range ($\pm 0.05 \mu\text{m}$ to $\pm 250 \text{ mm}$)
- Set custom gauge labels
- mm / μm switching
- Preset, latch, peak hold
- Display current, maximum, minimum and P-P values
- GO/NG results for current value (red, yellow and green)
- Current value chart
- CSV data output (time stamp, measurement values, GO/NG results)

■ Recommended system requirements

OS	Windows 10 (32bit/64bit)
CPU	Intel Core i3 or higher
Memory	2 GB or more
Storage	200 MB or more
Framework	.NET Framework 4.6 or higher
Compatible models	DS805S, DS812S, DS830S, DS series, DT series (via MT30)
Supported languages	Japanese/English/Deutsch

⚠ To use this product safely, please read the instruction manual carefully and thoroughly prior to usage. •Magnescale reserves the right to change product specifications without prior notice.

Magnescale Co., Ltd.

International Sales Department : 3-1-4 Edagawa, Koto-ku, Tokyo 135-0051, Japan TEL.+81(0)3-6632-7924 FAX.+81(0)3-6632-7928
 Magnescale Americas Inc. : 1 Technology Drive, Suite F217, Irvine, CA 92618, USA TEL.+1(949)727-4017 FAX.+1(949)727-4047
 Magnescale Europe GmbH : Antoniusstrasse 14, 73249 Wernau, Germany TEL.+49(0)7153-934-291 FAX.+49(0)7153-934-299
 Service & Parts : 45 Suzukawa, Isehara-shi, Kanagawa 259-1146, Japan TEL.+81(0)463-92-2132 FAX.+81(0)463-92-3090

www.magnescale.com

MAGNESCALE is a trademark or registered trademark of Magnescale Co., Ltd., Japan The contents of this literature are as of May, 2021
 MeasureViewer-EA01C
 C.2105.CB.500